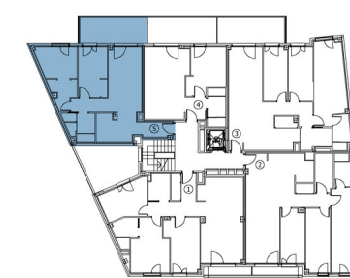
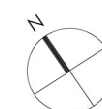
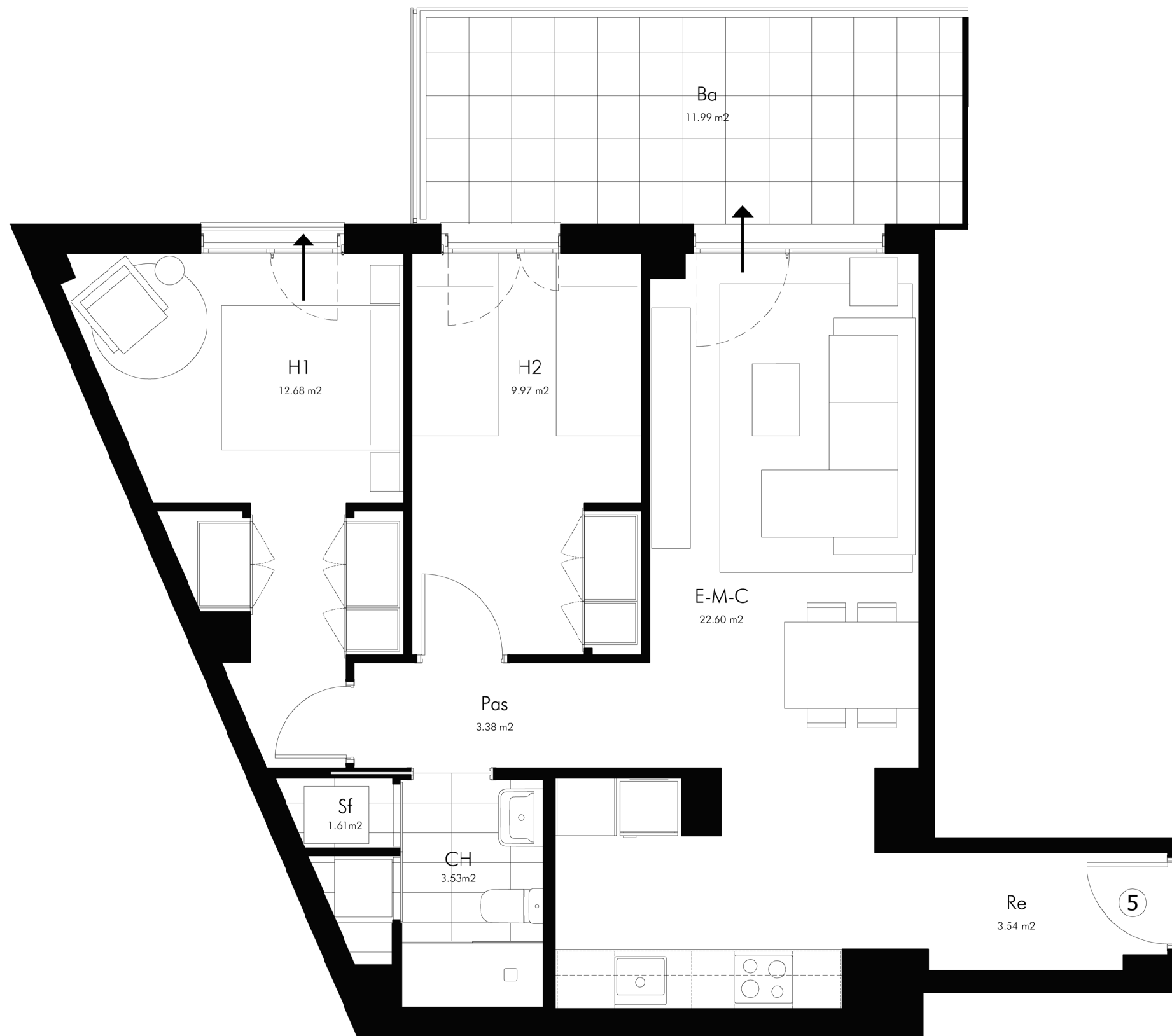




PLANTA PRIMERA, PORTA 5ª

SUPERFÍCIE ÚTIL INTERIOR TOTAL	57,31 m ²
SUPERFÍCIE CONSTRUÏDA INTERIOR	68,98 m ²
SUPERFÍCIE ÚTIL BALCÓ	12,01 m ²



CARRER PROGRÉS

