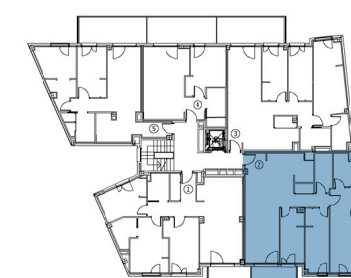
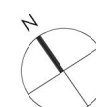
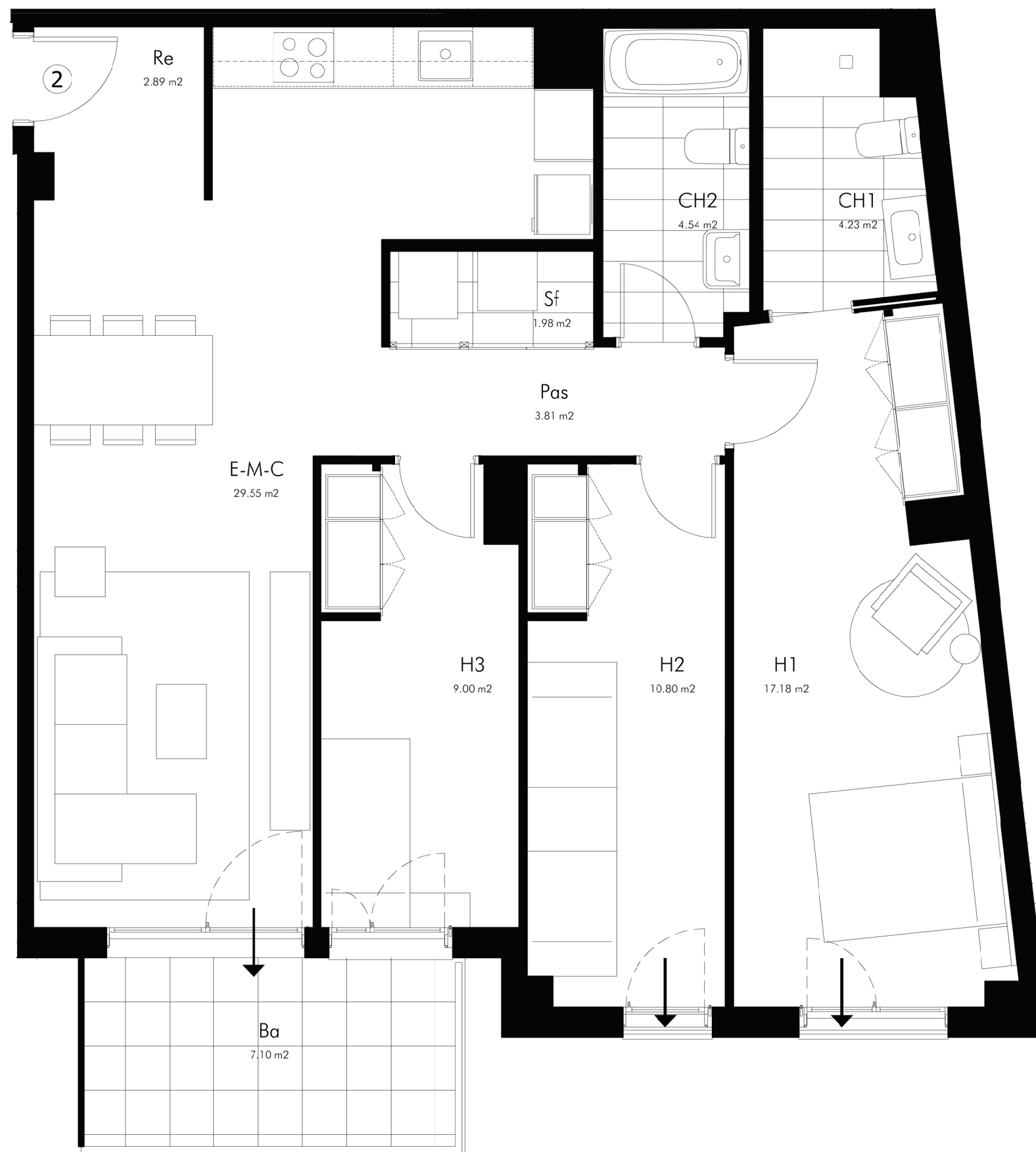




**PLANTA SEGONA, PORTA 2ª**

SUPERFÍCIE ÚTIL INTERIOR TOTAL	83,98 m <sup>2</sup>
SUPERFÍCIE CONSTRUÏDA INTERIOR	96,58 m <sup>2</sup>
SUPERFÍCIE ÚTIL BALCÓ	7,1 m <sup>2</sup>



CARRER PROGRÉS

